

Corners to be Indexed

W1/4 8-106-40 (E1/4 7-106-40)
E1/4 8-106-40
SE 8-106-40 (NE 17-106-40)
S1/4 8-106-40 (N1/4 17-106-40)
SW 8-106-40 (NE 18-106-40)

JUL 03 2023

Karen Brown

I hereby certify that this document and the data contained herein was prepared by me or under my direct supervision.

[Signature]

6/29/2023

Daniel L. Buettel

Date

License No. 4 344

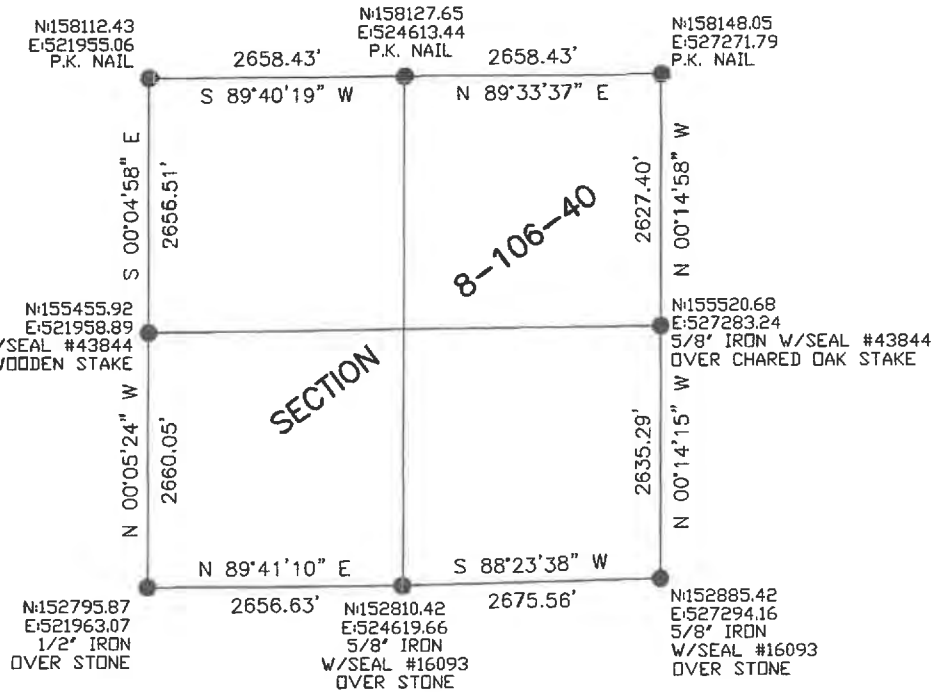
CERTIFICATE OF LOCATION OF GOVERNMENT CORNER

Land survey monuments situated in Section 8, Township 106, Range 40, 5TH P.M.

STATE OF MINNESOTA, County of MURRAY



- FOUND MONUMENT
- SET MONUMENT



Murray County Coordinate System (1996 Adj.)

Statement of Evidence

In June of 1861, J.W. Myers surveyed the township lines.

In October of 1861, Lewis Brockman subdivided the township.

W1/4 8-106-40 (E1/4 7-106-40)

On October 22, 1901, a survey done by J.W. Woolstencroft shows a wooden stake at the corner.

A survey by Perry Zieske dated December 15, 2009, describes the corner as the intersection of the centerline of the township road and the fence line running east-west. No monument shown as set.

On June 23, 2023 Bueltel-Moseng Land Surveying dug a large hole with a backhoe and found a 2"x3" wooden stake with a large stone on the west side. Accepted the position of the stake and set a 5/8" iron with seal #43844 over top of the stake.

E1/4 8-106-40

On October 22, 1901, a survey done by J.W. Woolstencroft shows a stone in grade as the corner.

A survey by Perry Zieske dated December 15, 2009, shows a found iron monument at the corner.

October 16, 2021, Seth Wichman, LS, (Westwood Professionals), did not find iron noted on Zieske survey. Set corner 1/2" iron with cap no. 57085 at corner using information from Zieske survey.

On June 23, 2023 Bueltel-Moseng Land Surveying found a 1/2" iron with cap no. 57085 at corner. Tied out found corner and dug with backhoe. Found a large charred oak stake. We then probed all around the charred stake and found nothing else. Record distance in 1901 from southeast corner is 2634 feet. measured distance to stone at southeast corner today is 2635.29 feet. Accepted the oak stake as the corner and set a 5/8" iron with seal with seal #43844 over top of the oak stake.

The found 1/2" iron with cap no. 57085 is 2.30 north of the oak stake at a bearing of N 13°17'41" E.

SE 8-106-40 (NE 17-106-40)

On October 22, 1901, a survey done by J.W. Woolstencroft shows a stone in grade as the corner.

A survey by Tim Bell dated April 28, 1988, notes he set 1/2" iron with cap no. 16093 over a stone.

On June 23, 2023 Bueltel-Moseng Land Surveying found a 1/2" iron with cap no. 16093.

S1/4 8-106-40 (N1/4 17-106-40)

On October 22, 1901, a survey done by J.W. Woolstencroft shows a stone in grade as the corner.

A survey by Tim Bell dated April 28, 1988, notes he set 1/2" iron with cap no. 16093 over a stone.

On June 23, 2023 Bueltel-Moseng Land Surveying found a 1/2" iron with cap no. 16093.

SW 8-106-40 (NE 18-106-40)

On October 22, 1901, a survey done by J.W. Woolstencroft shows a stone in grade as the corner.

A survey by Tim Bell dated April 28, 1988, notes he set 1/2" iron with cap no. 16093 over a stone.

On June 23, 2023 Bueltel-Moseng Land Surveying found a 1/2" iron. Probed next to found iron and hit a stone. Accepted position of 1/2" iron.